

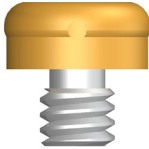
LOCATOR® BAR ATTACHMENT SYSTEM

IMPORTANT: This document contains the most current instructions for use. Please, read and retain.

DESCRIPTION: Universal hinge, resilient attachment for bar splinted endosseous implants.

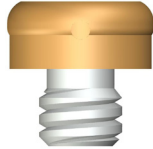
PARTS IDENTIFICATION

Locator Bar Female
(2.0mm Thread)
No. 8589



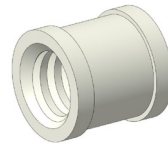
Titanium alloy
with TiN coating

Locator Bar Female
(2-56 Thread)
No. 8587



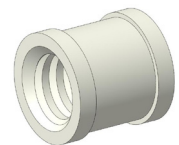
Titanium alloy
with TiN coating

2.0mm Castable
Threaded Insert
No. 8014



Delrin

2-56 Castable
Threaded Insert
No. 8013



Delrin

Locator Laser Bar
Female (Stainless Steel)
No. 8590



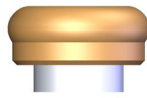
Stainless Steel
with TiN coating

Female Analog
(4mm) **No. 8530**



Aluminum

Locator Laser Bar
Female (Titanium)
No. 8588



Titanium alloy
with TiN coating

Processing Spacer
No. 8569



Delrin

Locator Cast-To Bar
Female **No. 8586**



Stainless Steel
(no TiN coating)

5.0 lb. Repl.
Male
No. 8524



Nylon (Clear)

Block Out Spacer
No. 8514



Silicon Rubber
(White)

3.0 lb. Light
Retention Repl.
Male **No. 8527**



Nylon (Pink)

1.5 lb. Extra Light
Retention Repl.
Male **No. 8529**



Nylon (Blue)

Locator Zero
Retention
Replacement Male
No. 8558



Nylon (Gray)

Impression Coping
No. 8505



Aluminum housing with
black low Density
Polyethylene Male

Yellow Bar Processing
Cap Male/Pkg.
No. 8028



Titanium Cap with yellow
Low Density Polyethylene
Male, 2- Block Out Spacers,
and Nylon Replacement
Males (clear, pink, blue)

Parallel Post
No. 8517



Low Density
Polyethylene
(Black)

Yellow Bar Processing
Replacement Male
No. 8026

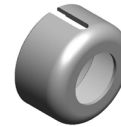


Low Density
Polyethylene
(Yellow)

Locator Core Tool
No. 8393
(Male Removal
Tool, Male Seating Tool,
and Abutment Driver)



Abutment
Retaining Sleeve
No. 8394



Polysulfone

Drill & Tap
Holder
No. 8016



Locator Paralleling
Mandrel No. 9107



30N-cm Torque Wrench Kit
No. 9020 (30N-cm Torque
Wrench, 15mm Square Drive
Insert and Thumb Knob)



1.7mm Bar Drill
(2.0mm Thread)
No. 9102



1.8mm Bar Drill
(2-56 Thread)
No. 9103



2.0mm Bar Tap
(2.0mm Thread)
No. 9104



2-56 Bar Tap
(2-56 Thread)
No. 9105



INDICATIONS

The LOCATOR® Bar Attachment System is designed for use with overdentures or partial dentures, retained in whole or in part, by bar splinted endosseous implants in the mandible or maxilla.

CONTRAINDICATIONS

Not appropriate where a totally rigid connection is required.

CAUTION

Federal (U.S.A.) law restricts this device to sale by or on the order of a licensed dentist.

SINGLE USE DEVICES

Locator Males: The inadvertent re-use of a Locator nylon males could cause loss of retention for the overdenture due to wear from previous use or damage during removal with the Locator Core Tool.

Locator Bar Females: The removal of a Locator Cast-to Bar Female or a Laser Bar Female from a fabricated bar could cause damage to both the device and the bar. The inadvertent re-use of a Locator Bar Female could contain patient contamination build-up and subsequent wear of the retention bands. This would result in the device to perform with improper fit and function which would result in loss of retention for the prosthesis.

STERILIZATION

All components and instruments are supplied **NON-STERILE**.

Titanium Bar Females may be sterilized by Autoclave or Dry Heat sterilization using the following parameters:

1. Autoclave sterilize using 121° C (250° F), (15-20 psig at sea level), for 20 minutes minimum.
2. Dry Heat sterilize using 170° C (338° F) for 2 hours minimum.

Locator Core Tools (**in the disassembled state only**) may be sterilized by Autoclave or Dry Heat sterilization using the following parameters:

1. Autoclave sterilize using 121° C (250° F), 15-20 psig (at sea level), for 40 minutes minimum.
2. Dry Heat sterilize using 170° C (338° F) for 2 hours minimum.

FEATURES

1. **LOWEST VERTICAL HEIGHT:** The total height of the Locator Bar Attachment (abutment plus male) is only 2.5mm on a cast alloy bar.
2. **LOCATING DESIGN:** Self-locating design allows a patient to easily seat their overdenture without the need for accurate alignment of the attachment components.
3. **RETENTION INSIDE AND OUT:** The patented *Dual Retention* innovation provides the Locator Attachment with greater retention surface area than ever before available with other attachments. A combination of inside and outside retention ensures the longest lasting performance.
4. **ROTATIONAL PIVOTING ACTION:** The design of the pivoting Locator Male allows a resilient connection for the prosthesis without any resulting loss of retention. The retentive nylon male remains completely in contact with the abutment socket while its metal denture cap has a full range of rotational movement over the male.
5. **CHOICE OF FOUR TECHNIQUES:** The Locator Bar Attachment can be placed by any of the four popular techniques used by Dental Laboratories to fabricate an implant retained bar with attachments:
 1. Cast a Castable Threaded Insert into a bar for a removable threaded Locator Bar Female connection.
 2. Drill and tap the bar for a threaded Locator Bar Female.
 3. Laser weld a Locator Laser Bar Female to the bar.
 4. Cast-to the stainless steel Locator Cast-To Bar Female with gold alloy.

A. PLACEMENT OF THE LOCATOR BAR ATTACHMENT

The Locator Bar Attachment can be placed by any choice of the four following techniques used by a Dental Laboratory to fabricate a bar with dental attachments. **CAUTION: The most critical consideration in the proper placement of the Locator Bar Attachment on a milled or cast bar is that a minimum of 1.0mm of bar material remains between the edge of a UCLA type screw retaining the bar and the Locator Bar Female, or a minimum of 5.0mm between the edges of multiple placed Locator Bar Females that is required to avoid interference of the Locator Titanium Denture Caps. (Locator Bar Female = 4.0mm Diameter, Locator Denture Cap = 5.5mm Diameter).**

Technique to cast a Castable Threaded Insert into a bar for a removable threaded Locator Bar Female

1. A) Parts needed – New Case:
 - (8014) 2.0mm Castable Threaded Insert
 - (8589) Locator Bar Female (2.0mm Thread)
 - (9104) 2.0mm Bar Tap (2.0mm Thread)
 - (8016) Drill and Tap Holder
- B) Parts needed – Replace TSB Ball Attachment:
 - (8013) 2-56 Castable Threaded Insert
 - (8587) Locator Bar Female (2-56 Thread)
 - (9105) 2-56 Bar Tap (2-56 Thread)
 - (8016) Drill and Tap Holder
2. The 2.0mm Castable Threaded Insert (Zest order No. 8014) and a 2.0mm Bar Tap (Zest order No. 9104) are used for creating the threaded site in a cast alloy bar.

3. Survey and set a delrin Castable Threaded Insert into the wax pattern of the bar at each site where a Locator Bar Attachment is needed. The top of the Threaded Insert should be flush with the top surface of the surrounding bar pattern.
4. The delrin Castable Threaded Insert will become part of the cast alloy bar when the bar pattern is cast using standard casting procedures.
5. Insert and tighten the 2.0mm Bar Tap into the Drill & Tap Holder (Zest order No. 8016) and position it into the handpiece of a precision drilling device. Use the Bar Tap to chase and clean out the cast internal threads of the attachment site.
6. A special Locator Gold-Plated Abutment Driver (attached to the Locator Core Tool, Zest order No. 8393) is designed to engage the inside diameter of the threaded Locator Bar Female and thread it into the bar. A Locator Abutment Retaining Sleeve (Zest order No. 8394) slips onto the Abutment Driver to hold the Locator Bar Female while delivering it to the threaded site in the bar.
7. Final torque tightening of the Locator Bar Female to prevent screw loosening is achieved using the 30Ncm Torque Wrench (Zest order No. 9020 Kit). In addition, Locator Torque Wrench Drivers that fit directly into the Locator Bar Female are available for most brands of torque wrenches.

Technique to drill and tap a bar for a removable threaded Locator Bar Female

1. A) Parts needed – New Case:
 - (8589) Locator Bar Female (2.0mm Thread)
 - (9102) 1.7mm Bar Drill (2.0mm Thread)
 - (9104) 2.0mm Bar Tap (2.0mm Thread)
 - (8016) Drill & Tap Holder
- B) Parts needed – Replace TSB Ball Attachment:
 - (8587) Locator Bar Female (2-56 Thread)
 - (9103) 1.8mm Bar Drill (2-56 Thread)
 - (9105) 2-56 Bar Tap (2-56 Thread)
 - (8016) Drill & Tap Holder
2. The 1.7mm Bar Drill (Zest order No. 9102) and a 2.0mm Bar Tap (Zest order No. 9104) are used for creating the threaded site in a titanium bar or cast alloy bar. First use a round carbide bur to create a dimple into the top of the bar at the exact site of the planned preparation.
3. Insert and tighten the 1.7mm Bar Drill into the Drill & Tap Holder (Zest order No. 8016) and position it into the handpiece of a precision drilling device. Use the 1.7mm Bar Drill to create the exact size diameter hole to a depth of 2.8mm that is needed for tapping the site.
4. Place the 2.0mm Bar Tap into the Drill & Tap Holder and position it into the handpiece of a precision drilling device to create internal threads within the drilled site. **The use of tapping fluid while cutting the threads is required to reduce the chance of breaking the tap off in the preparation.**
5. A special Locator Gold-Plated Abutment Driver (attached to the Locator Core Tool, Zest order No. 8393) is designed to engage the inside diameter of the threaded Locator Bar Female and thread it into the bar. A Locator Abutment Retaining Sleeve (Zest order No. 8394) slips onto the Abutment Driver to hold the Locator Bar Female while delivering it to the threaded site in the bar.
6. Final torque tightening of the Locator Bar Female to prevent screw loosening is achieved using the 30Ncm Torque Wrench (Zest order No. 9020 Kit). In addition, Locator Torque Wrench Drivers that fit directly into the Locator Bar Female are available for most brands of torque wrenches.

Technique to laser weld a Locator Laser Bar Female on top of a bar

1. A) Parts needed – Laser welding to a titanium bar:
 - (8588) Locator Laser Bar Female (Titanium)
 - (9107) Locator Paralleling Mandrel
- B) Parts needed – Laser welding to a cast gold alloy bar:
 - (8590) Locator Laser Bar Female (Stainless Steel)
 - (9107) Locator Paralleling Mandrel

2. Use the Locator Paralleling Mandrel (Zest order No. 9107) in a surveyor to place the Laser Bar Female into position. Insert the split end of the Paralleling Mandrel into the socket of the Laser Bar Female and tighten the knurled set screw to spread the split portion of the mandrel that will secure the Laser Bar Female to the mandrel.
3. Tack the Laser Bar Female into place on top of the bar by placing a spot of laser weld on opposite sides of the female.
4. Remove the Paralleling Mandrel by loosening the knurled set screw. Form a bead of weld around the entire base circumference of the Laser Bar Female, welding the attachment to the top of the bar.
5. Snap a Locator Denture Cap Yellow Processing Male Assembly (contained in Zest order No. 8028 package) onto the welded Laser Bar Female to make sure the laser weld does not interfere with the seating.

Technique for casting-to a Locator Cast-To Bar Female into a gold alloy bar

1. Parts needed – New Case:
(8586) Locator Cast-To Bar Female
(9107) Locator Paralleling Mandrel
2. Use the Locator Paralleling Mandrel (Zest order No. 9107) in a surveyor to place the Cast-To Bar Female into the waxed bar in a position that is parallel with other Locator Bar attachments. Insert the split end of the Paralleling Mandrel into the socket of the Cast-To Bar Female and tighten the knurled set screw to spread the split portion of the mandrel that will secure the Cast-To Bar Female to the mandrel. Note: For accurate positioning of the Cast-To Bar Female the Locator Paralleling Mandrel is preferred to be used in place of the plastic Parallel Post that comes with the attachment, and is removed to use the Paralleling Mandrel instead.
3. Wax the Cast-to Bar Female directly into the bar. The wax should be built up to the bottom outside corner on the base of the female, leaving the majority of the outer surface on the base above the top level of the bar.
4. Remove the Paralleling Mandrel by loosening the knurled set screw, leaving the stainless steel attachment open for investment material to flow into.
5. Spruing. Run the sprue at a 45 degree angle to the Cast-To Bar Female so the molten gold will flow down along one side of the female, around and up to the other side. The sprue should not be directed at the female that could possibly dislodge it when casting.
6. It is recommended to use debubbler to reduce surface tension during investing procedures.
7. Investing. The most successful castings have been accomplished by using Ceramigold Investment by Whip Mix Corp. or an equivalent High Heat Investment. Use a casting ring at all times. **(Do not use the ringless technique of investing and casting for the Cast-To Bar Female.)**
8. Mix a liquid/powder ratio of Ceramigold using 12ml to 60 grams of powder for each packet of mix needed. Hand mix for 15 seconds and vacuum mix for 90 seconds at 350-450 RPM. The investment material should be carefully painted into each attachment cavity to avoid trapping bubbles and to prevent gold from going inside the female. The remainder of the investment poured into the ring will stabilize the female during burnout. Place the ring in a water bath for one hour, then bench set for a half hour.
9. Burnout. Place ring in a cold furnace (sprue side down) and raise the temperature to 1500° F maximum. Use a rate of climb of 0° F to 1500° F maximum over a time period of one hour. Hold at 1500° F maximum until burnout is complete. (Refer to investment manufacturer's instructions for suggested burnout duration.)
10. Casting. Use only precious or semi-precious alloys for casting the stainless steel female into a bar. Non-precious alloys should not be used. Cast the bar using recommended temperatures of the alloy manufacturer. The stainless steel Cast-To Bar Female will withstand a temperature of up to 2000° F without any dimensional change. **Do not allow casting temperature to raise above 2000° F which will melt the stainless steel Bar Female!**

11. Divesting. After casting, allow the casting to bench cool for 20 minutes. Be careful to push out the casting and investment with proper tools. It is not recommended to hammer or bang on rings that may distort the castings. To remove the investment material from the Cast-To Bar Female without damage to the stainless steel, use an acid-free investment and porcelain remover solution in an ultrasonic unit for a period of 30-45 minutes. **(Do not use a bur to remove the investment, sandblasting with aluminum oxide, or an acid pickling solution, all of which can damage the retention surfaces of the Bar Female attachment.)** Clean the bar containing the Locator Cast-To attachment in an ultrasonic cleaner solution.
12. Finishing and Polishing. When polishing with a rubber wheel, use caution not to damage the Cast-To Bar Female attachment. Polish the surface of the bar to make a smooth surface. The Locator Parallel Post (Zest order No. 8517) can be placed on the female to protect the attachment while polishing. [If additional polishing of the female attachment is required, it is recommended to only use glass beads at a low pressure (40 PSI) or a fiberglass or bristle polishing brush.]
13. After polishing the bar, place a Locator Denture Cap Yellow Processing Male Assembly (contained in Zest order No. 8028 package) onto each Cast-To Bar Female and check for proper fit. Clean again in an ultrasonic solution and deliver to the dental office.

B. LOCATOR DENTURE CAP MALE PLACEMENT BY THE DENTIST

1. Placement of the desired type of Locator Bar Female into the bar (see Section A) and delivery of the bar to the patient must be completed before beginning the procedure for placement of the Locator Denture Cap Yellow Processing Male Assembly.
2. Place a White Block-Out Spacer (contained in Zest order No. 8028 Package) over the head of each Locator Bar Female. The spacer is used to block out the area immediately surrounding the attachment. The space created will allow the full resilient function of the pivoting metal denture cap over the Locator Nylon Male.

NOTE: Due to the additional height required for the Laser Bar Females (Zest order No. 8588 and No. 8590), they require the use of 2 White Block-Out Spacers stacked on top of each other for proper block out. It is also necessary to block out all undercuts beneath the bar to prevent the added acrylic resin from locking the denture onto the bar.

3. Insert a Locator Denture Cap Yellow Processing Male Assembly (contained in Zest order No. 8028 Package) onto each Locator Bar Female, leaving the White Block-Out Spacer beneath it. The Locator Yellow Bar Processing Replacement Male will maintain the overdenture in the upper limit of its vertical resiliency during the processing procedure.
4. Prepare a recess in the denture to accommodate the protruding Locator Denture Cap Yellow Processing Male Assembly. There must be no contact between the denture and the titanium cap. If the denture rests on the metal cap, excess pressure on the implant will result.
5. Use the Chairside Dental Attachment Light Cure Kit (Zest order No. 9403) to light cure bond the Locator Denture Cap Yellow Processing Male Assembly into the denture, or mix a permanent self-curing acrylic and place a small amount in the recess of the denture and around the metal cap of the Locator Denture Cap Yellow Processing Male Assembly.
6. Insert the denture into position in the oral cavity. Guide the patient into occlusion, maintaining a proper relationship with the opposing arch. **Maintain the denture in a passive condition, without compression of the soft tissue, while the acrylic sets. Excessive occlusal pressure during the setting time may cause tissue recoil against the denture base and could contribute to dislodging and wear of the nylon males.**
7. After the acrylic resin has cured, remove the denture and discard the White Block-Out Spacer. Use a bur to remove excess acrylic, and polish the denture base before changing to the appropriate Locator Nylon Replacement Male.

8. Use the Locator Male Removal Tool (attached to the Locator Core Tool, Zest order No. 8393) to remove the Yellow Bar Processing Replacement Male from the metal Denture Cap. The sharp circular edge on the end of the removal tool should be wedged tightly down into the bottom of the Yellow Bar Processing Replacement Male so that it will catch the inside of the male and pull it at an angle out of the metal housing.
9. The Locator Male Seating Tool (attached to the Locator Core Tool, Zest order No. 8393) is used to firmly push a Locator Replacement Male into the metal Denture Cap. The Replacement Male must seat securely into place, level with the rim of the cap. Use of multiple Locator attachments (3 or more) in the same dental arch may require use of the 1.5 lbs. (extra light retention) blue colored Replacement Male No. 8529 in combination with 0.0 lbs. (non-retentive) gray colored Replacement Male No. 8558, for easier removal of the prosthesis by the patient.
NOTE: The Replacement Male will not stay on the tool when it is turned upside down due to the varying sizes of males available. It is best to hold the denture with the base side down and snap the male into the metal Denture Cap.
10. Instruct the patient in the path of insertion. Have the patient insert and remove the appliance several times.

C. LOCATOR DENTURE CAP MALE PLACEMENT BY THE LABORATORY

1. Placement of the desired type of Locator Bar Female into the bar must be completed (see Section A) before beginning the procedure for placement of the Locator Male.
2. Place a Locator Impression Coping with Black Processing Male (Zest order No. 8505) onto each Locator Bar Female.
3. **Take an impression using a firm body impression material, exercising caution not to compress the soft tissue.** The Locator Impression Coping is designed with minimum retention to be picked up with the impression material.
4. Snap a Locator Female Analog (Zest order No. 8530) onto each Impression Coping in the impression. The analog female must not fall off when turned upside-down with vibration.
5. Pour the master cast. Upon separation, the Locator Female Analog is a part of the master cast replicating the position of the Locator Bar Female on the bar.
6. Before waxing and processing the appliance, place a Locator Denture Cap Yellow Processing Male Assembly (contained in Zest order No. 8028 package) onto each Locator Female Analog in the master cast. Make sure the male is fully seated.
7. Set the teeth and wax the appliance. Proceed with the processing technique of your choice through the boil-out step.
8. After the boil-out, remove the Locator Denture Cap Yellow Processing Male Assembly. Place a White Block-Out Spacer (contained in Zest order No. 8028 package) over the head of each Female Analog. The spacer is used to block out the immediate area surrounding the Locator Bar Female. The space created will allow the full resilient function of the pivoting metal Denture Cap over the Locator Nylon Male.
NOTE: Due to the additional height required for the Laser Bar Females (Zest order No. 8588 and No. 8590), they require the use of 2 White Block-Out Spacers stacked on top of each other for proper block out.
9. Re-insert the Locator Denture Cap Yellow Processing Male Assembly onto each Female Analog, leaving the White Block-Out Spacer beneath it. The Yellow Bar Processing Male will maintain the overdenture in the upper limit of its vertical resiliency during the processing procedure.

NOTE: If the dentist prefers to do a chairside pickup of the Locator Denture Cap Yellow Processing Male Assembly, use of the Locator Processing Spacer (Zest order No. 8569) will create the exact space needed.

10. Complete the processing and discard the White Block-Out Spacer. Polish the denture base before changing to the appropriate Locator Nylon Replacement Male.
11. Use the Locator Male Removal Tool (attached to the Locator Core Tool, Zest order No. 8393) to remove the Yellow Bar Processing Replacement Male from the metal Denture Cap. The sharp circular edge on the end of the removal tool should be wedged tightly down into the very bottom of the Yellow Bar Processing Replacement Male so that it will catch the inside of the male and pull it at an angle out of the metal housing.
12. The Locator Male Seating Tool (attached to the Locator Core Tool, Zest order No. 8393) is used to firmly push a Locator Replacement Male into the empty metal Denture Cap. The Replacement Male must seat securely into place, level with the rim of the cap. Use of multiple Locator attachments (3 or more) in the same dental arch may require use of the 1.5 lbs. (extra light retention) blue colored Replacement Male No. 8529 in combination with 0.0 lbs. (non-retentive) gray colored Replacement Male No. 8558, for easier removal of the prosthesis by the patient.

NOTE: The Replacement Male will not stay on the tool when it is turned upside down due to the varying sizes of males available. It is best to hold the denture with the base side down and snap the male into the metal Denture Cap.

D. HOW TO CHANGE THE LOCATOR MALE

1. The Locator Core Tool, (Zest order No. 8393) which contains a Locator Male Removal Tool and Locator Male Seating Tool is used to remove the Nylon Male from the metal Denture Cap and replace it with a Locator Replacement Male.
2. Use the Male Removal Tool attached to the Locator Core Tool to remove the Nylon Male from the metal Denture Cap. The sharp circular edge on the end of the removal tool should be wedged tightly down into the very bottom of the Nylon Male so that it will catch the inside of the male and pull it at an angle out of the metal housing. To discard the Nylon Male from the tip on the Core Tool, point the tool down and away from you and tighten the Male Removal Tool clockwise back onto the Core Tool. This will activate the Removal Pin and dislodge the Nylon Male from the tip end of the Male Removal Tool.
3. The Locator Male Seating Tool is used to firmly push a Locator Replacement Male into the empty metal denture cap. The replacement male must seat securely into place, level with the rim of the cap.

NOTE: The Replacement Male will not stay on the tool when it is turned upside down due to the varying sizes of males available. It is best to hold the denture with the base side down and snap the male into the metal Denture Cap.

E. RELINE AND REBASE

1. Remove each existing Nylon Male from its metal Denture Cap following the steps in HOW TO CHANGE THE LOCATOR MALE (Section D). Replace them with Yellow Bar Processing Replacement Males (Zest order No. 8026). The built-in spacer of the Yellow Bar Processing Replacement Male will maintain the overdenture in the same position on the bar as with the original processing, during the reline process.
2. Take a reline impression using the existing overdenture as a tray.

3. The Yellow Bar Processing Replacement Males will engage the Locator Bar Females and hold the prosthesis in place while the impression material sets. When the impression is withdrawn, the Yellow Bar Processing Replacement Males will remain in the metal Denture Caps.
4. Snap a Locator Female Analog (Zest order No. 8530) into each Locator Denture Cap Yellow Processing Male Assembly in the impression and pour a master model.
5. After processing the reline and polishing the denture base, replace the Yellow Bar Processing Replacement Males with the appropriate Locator Nylon Replacement Males.

F. PATIENT CARE

Good oral hygiene is vital to implant bar attachment success. The Locator Bar Females must be thoroughly cleaned each day to prevent wear due to a buildup of abrasive plaque in the socket of the component. The use of a soft nylon bristle or end-tufted toothbrush, and superfloss to polish the Locator Bar Females should be taught. A non-abrasive gel toothpaste, and an irrigation system is recommended to keep the socket of the Locator Bar Female clean.

Patients should maintain a three to four month recall for cleaning and attachment evaluation. The inside of the Locator Bar Females and the sulcus area around the bar are the primary areas of concern. Use plastic instruments for scaling the Locator Bar Females. Do not use metal instruments which may create scratches on the surface. Examine patients for signs of inflammation around the implants and for implant mobility. Use the appropriate Torque Wrench (30N-cm) to make sure the Locator Bar Female is tight before dismissal.

RETURN POLICY

Check with your Distributor for their policy on returns.

WARRANTY

Zest Anchors, LLC provides a limited warranty for its products, to the original purchaser, to be free from defects in workmanship and materials under normal use for a period of one year from the date of purchase. Zest Anchors, LLC will, at its option, substitute the returned product that proves to be defective with a similar product, free of charge.

Zest Anchors, LLC continually strives to improve its products, and therefore, reserves the right to improve, modify or discontinue products and components at any time without notice or incurring obligation. Purchaser assumes all risks and liability resulting from the use of Zest Anchors, LLC products, whether used separately or in combination with other products not of Zest Anchors, LLC manufacture.

