

crea.lign[®]

Veneering composite



Opalescence of crea.lign[®]

Dr. Vincenzo Musella, Modena, Italy



Opalescence of natural tooth

MDT Jürgen Freitag, Bad Homburg, Germany



create natural beauty

powered by
visio.lign[®]

visio.lign®

The aesthetic and functional system with unique material options, helping you to create natural beauty, function and physiology. The open system provides flexibility and freedom thanks to six components designed to compliment one another; crea.lign®, novo.lign®, neo.lign®, visio.CAM, visio.paint & bond.lign.

The combination of these components allows a variety of workflows and implant prosthetic solutions, each with perfect results.

visio.lign® – the system for stability and reliability. The result: durable prosthetic restorations featuring colour stability and superior load capacity.

The secret of

crea.lign®



“*Natural opalescence*”

4 Discover the fascination of
the crea.lign® veneering composites

crea.lign® –
The light-curing ceramic composite
for natural beauty



Photo: © 2016 "Zirconia substructure veneered with crea.lign®"

A custom-made restoration by Bettina Wilson (Dental Technician), bredent GmbH & Co. KG



1. crea.lign® veneering composite for permanent veneering of metal, ceramic and polymer substructures.

The exceptional material properties adapt elasticity and hardness of crea.lign® to the various substructure materials. crea.lign® contains only nano particles and no ground glass filler. It consists of 50 % opalescent ceramic filler and a high-strength oligomer matrix.

2. The omission of hard glass fillers results in optimised resistance to plaque and abrasion and prevents embrittlement of the material.
3. Agglomeration effects (lumping) in the material are avoided and a homogeneous and dense surface is achieved with a particle size of approx. 40 µm.
4. The crea.lign® veneering composite is available as a gel and a paste. Thanks to the flowability of crea.lign® improved masking and gap-free transitions to the veneer is achieved.

Take advantage of the benefits of crea.lign®

A. Natural beauty

- Natural opalescence
- Outstanding effect of depth thanks to specific refractive indices
- Translucency (more options than in ceramics)
- Design and layer structure according to natural teeth
- **Red-white aesthetics in 1 system:**
Matched crea.lign® materials for individualising teeth and gingiva
- **Classic range of shades** (A-D and Bleach) and additional **Enamel/Incisal** and **GUM** materials and a transparent crea.lign® Gel (Transpa Clear)

B. Physiology

- Clearly higher impact strength than ceramic (protects the antagonist by reducing the occlusal force)
- Abrasion values comparable to those of natural teeth
- Simple and fast reconstruction of the gingiva for all implant-prosthetic restorations

C. Reliability

- Chemical bonding to all substructure materials
- Result immediately visible:
"What you see is what you get"
- Shade stability and plaque resistance thanks to excellent polishing properties and minimal water absorption
- Optimised for implant-prosthetic restorations

Range of applications

Freestyle layering

- **Standard aesthetics**
- **High-end aesthetics**
- **Red aesthetics**
- **Light-up modelling**

1

→ see pages 8 to 11

Individualising

- **Red-White aesthetics**
Cut-back & individualisation
- **CDL by**
MDT Christian Dalla Libera

2

→ see pages 12 to 15

Guided layering

- **visio.lign® technique**
Completion of the novo.lign® veneers
- **TTT**
Table Top Template
- **CGS by ZTM Andrea Foschi**
- **ILT by Dr. Vincenzo Musella**

3

→ see pages 16 to 19

Benefits for the dental practice

D. Intraoral application

- Approved for oral use: for intraoral application
- Repair of chipping for all veneering materials
- Transition areas toward repairs not visible
- "What you see is what you get": Result is immediately visible and can be adapted
- Adjustments without loss in quality during try-in
- Result on the level of supra ceramics



Repair of chipping

4

→ see pages 22 to 23

Photo: © 2016 "Opalescence of natural tooth"
MDT Jürgen Freitag, Bad Homburg, Germany

Standard aesthetics

"Simple"

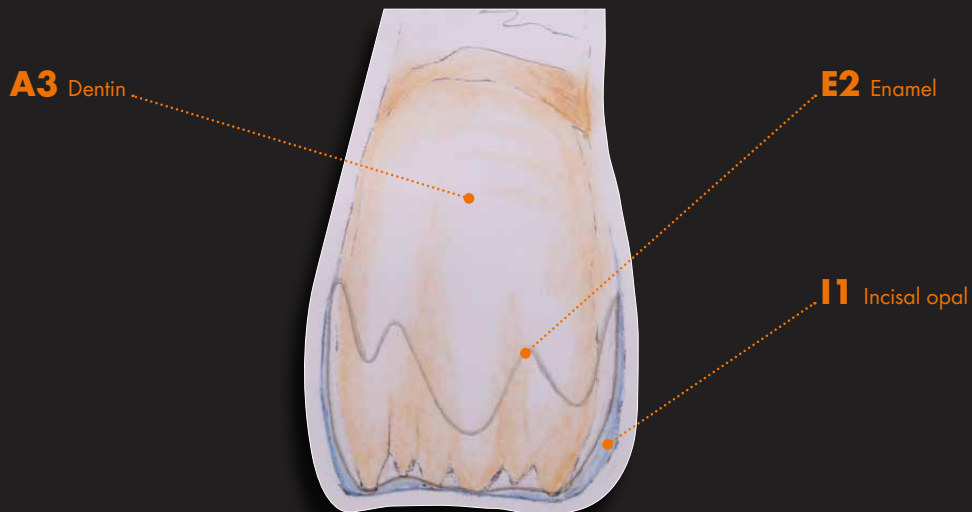


Tooth construction using just three shades **crea.lign®**

Achieve outstanding results quickly and easily using just three crea.lign® materials.

Shade matching with the shade tab confirms: crea.lign® enables almost perfect reproduction of the tooth shade with three materials only.

Standard layering



High-end aesthetics

"Accurate in every detail"

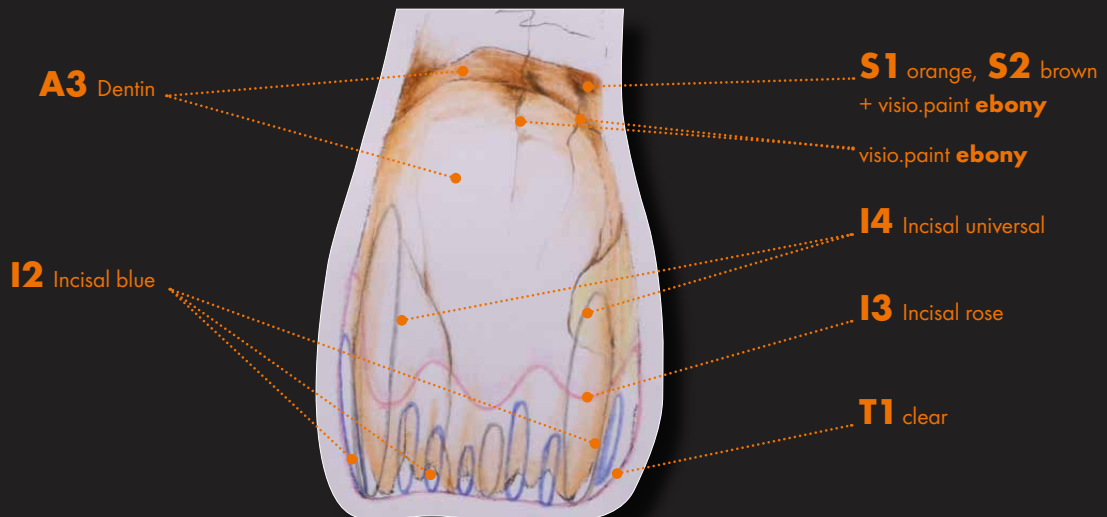


Reproducing the variety of individual characteristics of the tooth with only seven different crea.lign® shades.

Natural tooth or crea.lign®?

The original can hardly be distinguished from the reproduction. Perfect reproduction of the natural tooth thanks to natural opalescence, translucency and specific refractive indices of the crea.lign® material. Design, layer structure and effect of depth based on natural teeth.

Distinctive individual layering



Red aesthetics

"Vivid"



Layering with
crealign® Gel



Layering with
crealign® Paste



Light-up modelling

“Efficient”



Simplify the application of layers by briefly curing the crea.lign® materials using the small hand lamp.



CONVENIENT!

The small hand lamp is integrated in the crea.lign® syringe and can be removed if required.



Red-White aesthetics

Cut-back & individualising



neo.lign® denture teeth set up (design I45). 21 was customised in advance.



Cut-back of neo.lign® denture teeth (11 & 22). Then individualising is carried out using the crea.lign® materials: I1 opal, I2 blue, BL3 bleach, T1 clear, stain white.



After the full row of teeth has been customised, the gingiva is built up using crea.lign® materials Dentin A2, G1 light and G3 pink.

“ Individualisation with
crea.lign® for a truly
natural result ”

crea.lign®



Completed restoration: neo.lign® denture teeth (design 145) individualised with crea.lign® and individualised gingiva.

CDL - Creative Dynamic Layering

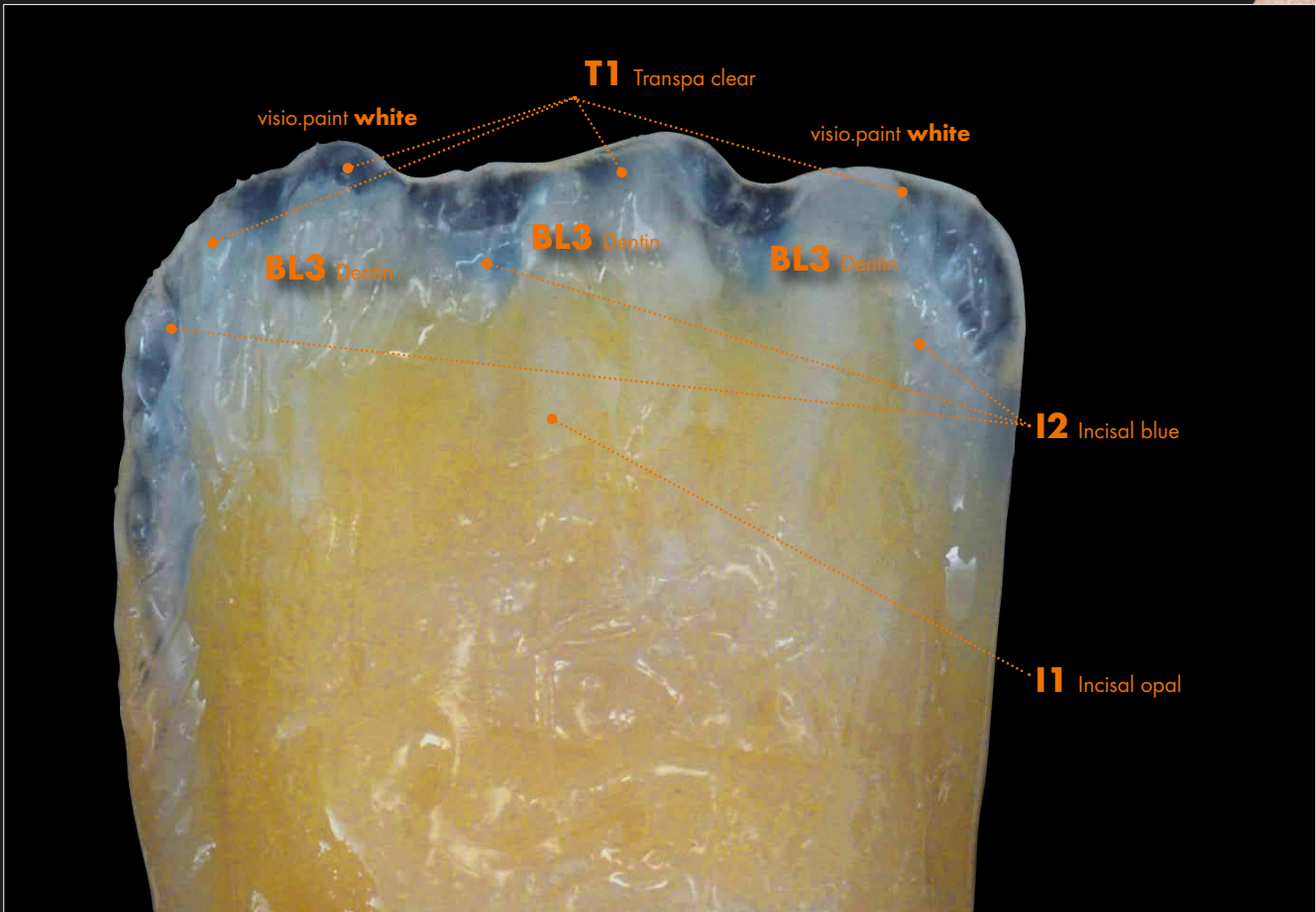
by MDT Christian Dalla Libera



Natural effect of depth, simple and reliable – thanks to effective layering and staining technique

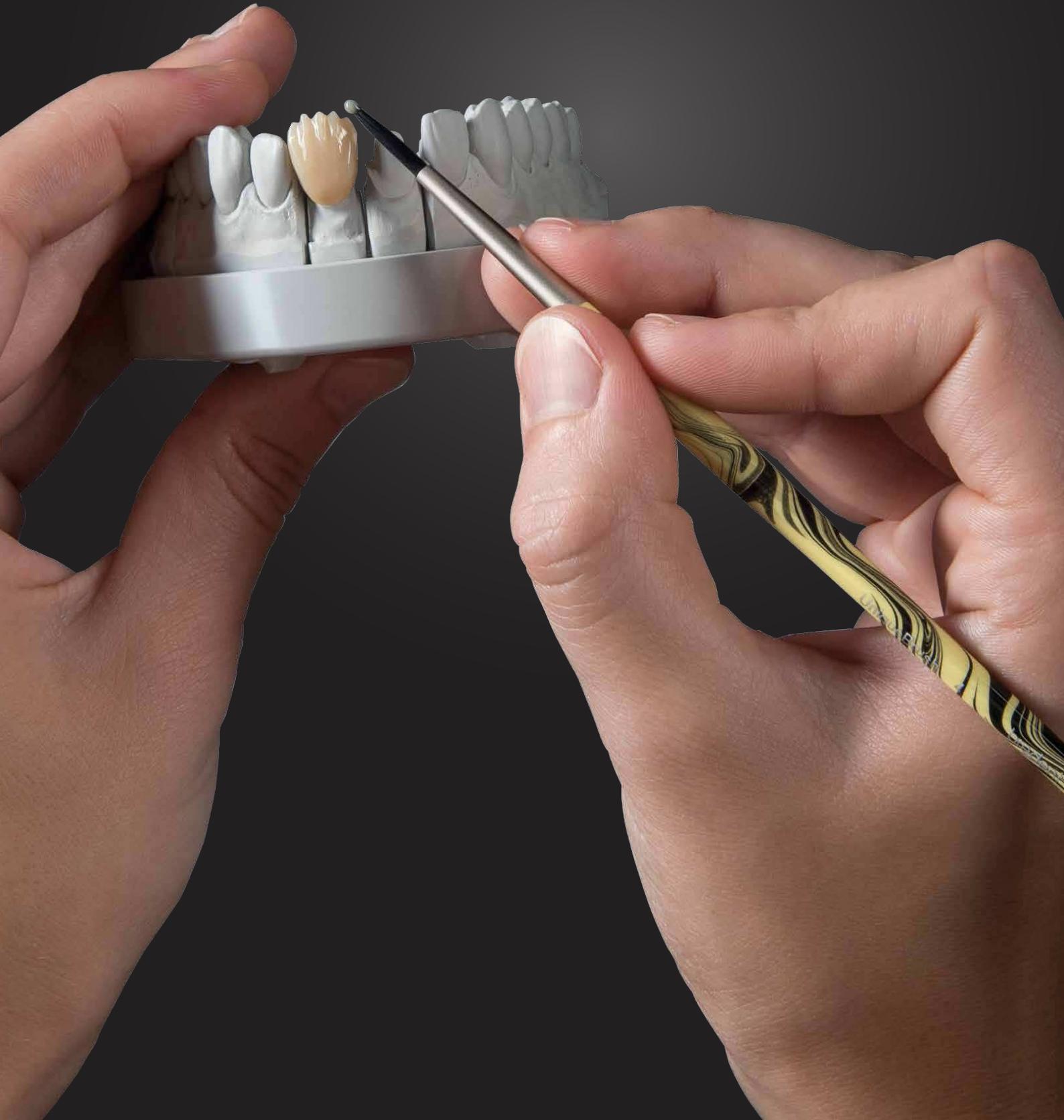
Benefits of CDL

- Natural effect of depth achieved with minimal effort
- Reliable creation of effects with the crea.lign® product range
- Individualisation techniques for red-white aesthetics



“ *Freestyle layering & individualising* ”

crea.lign®



visio.lign® technique

Building up the
novo.lign® veneers



crea.lign® is applied to the basal surface of the bridge unit and polymerised.



Final polymerisation of the built up novo.lign® veneers in the bre.lux Power Unit 2 light-curing device.



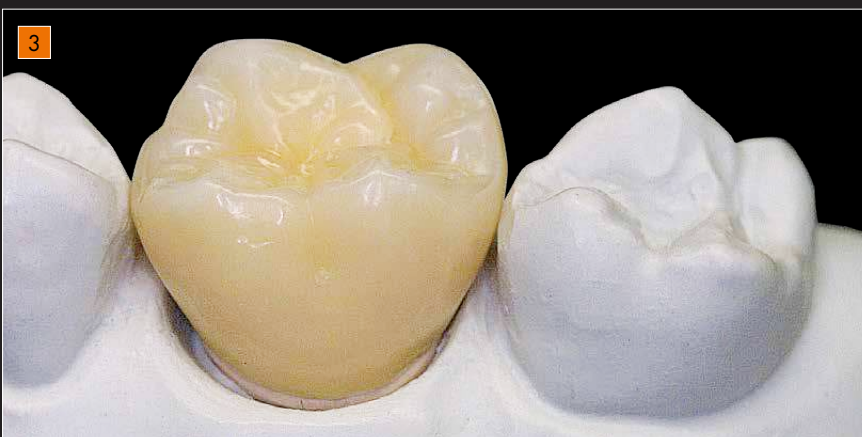
The finished veneers consisting of novo.lign® veneers and crea.lign® composite.

TTT**Table Top Template - Gnathoflex**
"Simple fabrication of occlusal surfaces"

Anatomical occlusal surfaces can be quickly and easily fabricated with the highly flexible Gnathoflex silicone moulds. For this purpose, crea.lign® materials are filled into the mould and polymerised.



The polymerised occlusal surface is fixed on the coping and the elastic Gnathoflex mould is removed.



The tooth shape is built up with the crea.lign® materials.

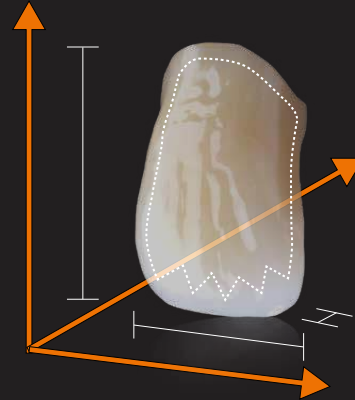
CGS – Customised Guided System

by MDT Andrea Foschi



Foschi

Reliable individual layering in all dimensions



Benefits of CGS

- Accurate reproduction of the tooth shape, function and the aesthetic set-up (preview)
- Reliable reproduction of the shade by guided layering
- Veneer or denture tooth in the preview are part of the completed restoration



Functional set-up with the neo.lign® denture teeth. Impression of the silicone key: palatal, occlusal and vestibular.



Cut-back of the neo.lign® denture teeth.



Individualisation by applying the crea.lign® material. The matrices that were previously removed are held repeatedly against the restoration to verify and ensure the shape and proper function.



The completed restoration.

Photos of CGS:

© 2016 by MDT Andrea Foschi, Ravenna, Italy

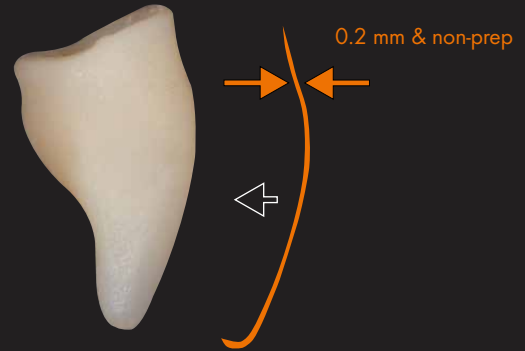
ILT – Inverse Layering Technique

by Dr. Vincenzo Musella



Musella

Extremely thin,
individually layered
non-prep veneers



Benefits of ILT

- Small volume:
ideal for occlusal ("Table Tops") and
aesthetic anterior veneers.
- reduced polishing:
thanks to the smooth surface of the matrix, a single polishing step
is sufficient to achieve high gloss



Initial situation of the patient.



2. Model of the initial situation.

3. Modelling in wax.



The various crea.lign® materials are applied (inverse layering) in the matrix.



Veneers in situ after permanent bonding.



Photo:

© 2016 by MDT Philipp von der Osten, Erlangen, Germany



“ *crea.lign® veneering composite*
- for perfect harmony of
red-white aesthetics. ”

crea.lign®

Intraoral, permanent repairs on the “level of supra ceramics”



After repairing with crea.lign® composite

Intraoral application

- Approved for oral use: for intraoral application
- Repair of chipping of all veneering materials
- “What you see is what you get”: Result is immediately visible and adaptable
- Firing in the furnace is not required
- Fast repair in situ: direct and simple

Permanent repair without loss in quality

- Material is approved for permanent repairs
- Uncompromised aesthetics: no differences in the shade and “repair transitions” can be recognised
- No deterioration of mechanical properties
- The result is on the level of supra ceramics

The Chipping Repair Kit

Chipping cases easily and simply repaired

- Primer can be used in combination with all prosthetic materials
- crea.lign® Incisal and Dentin materials (in A2 and A3 for masking 80 % of all cases)
- Just one Chipping Repair Kit for 100 treatments
- No hydrofluoric acid required

Chipping Repair Kit for dentists

REF CLIGNSETA:

includes crea.lign® composites in the shades A2/A3 including 4 primers and consumables.





crea.lign® Gel

Dentin



Gel

- | | | | |
|------|----|----|----|
| A1 | A4 | B4 | C4 |
| A2 | B1 | C1 | D2 |
| A3 | B2 | C2 | D3 |
| A3,5 | B3 | C3 | D4 |

BL3

GUM



Gel

- | | |
|----------|---------|
| G1 light | G4 red |
| G2 rosa | M4 lila |
| G3 pink | |

Transpa Clear



Gel

T1 clear

Enamel & Incisal



Gel

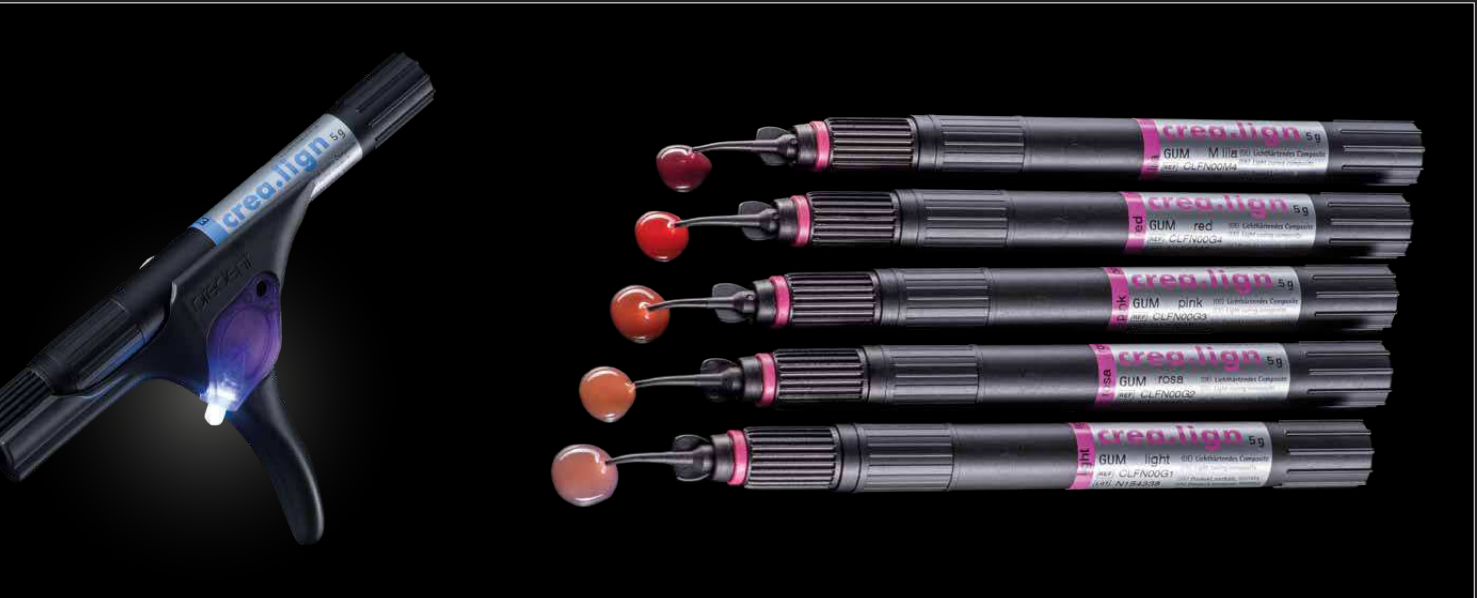
- | | |
|----|--------------|
| E1 | I1 opal |
| E2 | I2 blue |
| E3 | I3 rose |
| E4 | I4 universal |

Modifier



Gel

- | | |
|----------|------------|
| M1 beige | M3 caramel |
| M2 olive | M5 umbra |

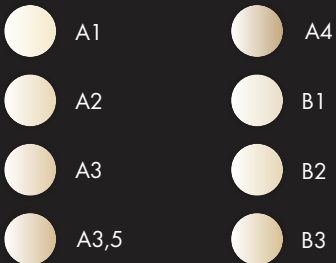


crea.lign® Paste

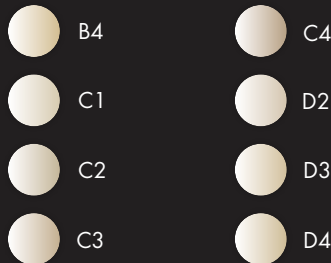
Dentin



Paste



BL3



GUM

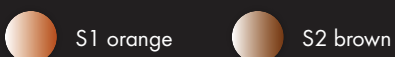


Paste



crea.lign®

Stains



crea.lign®

Modelling liquid



The flowability of crea.lign® Paste and Gel can be increased with crea.lign® Modelling Liquid.

⚠ When mixed with crea.lign®, the proportion of Mixing Liquid must not exceed 30 %.



crea.lign® freestyle complete set

115 pcs., aluminium case

"The complete solution for professionals"

Freestyle layering on PM/NPM, ceramic, zirconia, PMMA, novo.lign® veneers and neo.lign® denture teeth as well as high-performance polymers, such as BioHPP® and CAD/CAM materials, such as visio.CAM.

The complete set includes all available shades of the crea.lign® opaque, paste, gel and stains as well as visio.paint and the bond.lign primers/bonders.

REF CLIGNSETFK





Red-White aesthetic set

19 pcs.

"All you need for the gingiva"

Use the crea.lign® GUM materials in the visio.lign® system to individualise your dentures to achieve high-end aesthetics. Offer your customers this individualisation service and increase the profitability of your laboratory. Use your dentures to improve the reputation of your laboratory.

REF CLIGNSETG





Testin

create natural beauty

“ *The consistency of crea.lign® allows optimal use of the “Inverse Layering” technique since I am able to spread the various materials very precisely. Both the transitions in the finishing stage and polishing can be completed very easily thanks to the materials compactness and homogeneity, which ensures aesthetic, predictable and durable results.* ”



Dr. Vincenzo Musella

“ *The crea.lign® Gel GUM veneering material takes the benefits of substructures made of high-performance polymers to the next level. Feeling in the mouth, appearance and durability are a unique combination.* ”



MDT Philipp von der Osten

monials

“ *The perfect interaction of the neo.lign® denture teeth and the crea.lign® veneering composite enables individual, three-dimensional and dynamic layering in red-white aesthetics - for a lasting and harmonious smile of the patient.* ”



MDT Christian Dalla Libera

“ *After a long search I have finally found a composite that does not only provide ceramic-like properties, such as durability and translucency, but also excels with its natural opalescence. After I discovered crea.lign®, I hardly see any reason to use ceramics.* ”



MDT Andrea Foschi

visio.lign®

The Aesthetic and Functional system

Overview of visio.lign® media



REF 000651GB

crea.lign®
Red-White Aesthetic
Learn more about the possibilities of crea.lign® in red-white aesthetics.



REF 000590GB

bre.Lux
PowerUnit 2
The LED light-curing device is optimised for processing crea.lign® - a short summary of the most relevant information.



REF 000305GB

neo.lign®
Denture teeth
Design and function of the neo.lign® denture teeth will fascinate you. Discover the variety of teeth and select your favourite design.



crea.lign® - veneering composite

The light-curing composite features impressive natural opalescence and unparalleled light transmission for natural beauty.



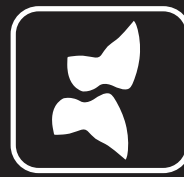
novo.lign® - veneers

The novo.lign® veneers feature an extended neck and a natural depth thanks to the morphological layer structure. The gold standard in implant prosthetics.



visio.CAM - composite blanks

The material benefits from the visio.lign® system is also available for CAD/CAM processing. The blanks from the visio.CAM line are compatible with the entire visio.lign® system.



neo.lign® - denture teeth

The neo.lign® denture teeth feature the same shades, designs and materials as the novo.lign® veneers – optimised for fixed/removable restorations.



bond.lign - primer/bonder

The primer/bonder system for a permanent and secure chemical adhesive bond between all system components and common framework materials – including BioHPP® (PEEK).



visio.paint - stains

The visio.paint stains enable fast and simple individualisation of veneers.



visio.lign®

Info folder

The most relevant materials for the visio.lign® system in a handy info folder.

REF 000274GB



visio.lign®

Presentation

of the system
A compact summary of the variety of products of the visio.lign® system.

REF 009504GB



visio.lign®

Manual

Step-by-step instructions of the various processing techniques and possibilities of the visio.lign® system.

REF 000234GB

crea.lign®

Veneering composite



create natural beauty

bredent
group

000577GB-20170124
Subject to errors and changes

